

Modular Cooking Range Line EVO700 2-Hot Plates Electric Boiling Top Range

ITEM # _____

MODEL # _____

NAME # _____

SIS # _____

AIA # _____

**372014 (Z7ECED2R00)**2-hot plate (2,6 kW each)
electric boiling top**372126 (Z7ECED2R0N)**2-hot plate (2,6 kW each)
electric boiling top

Short Form Specification

Item No. _____

To be installed on open base installations, bridging supports or cantilever systems. Two 2.6 kW cast-iron hot plates hermetically sealed to the one-piece top. Exterior panels in stainless steel with Scotch Brite finish. One piece pressed work top in 1.5 mm thick stainless steel. Right-angled side edges to allow flush-fitting junction between units.

Main Features

- Unit to be mounted on open base cupboards, bridging supports or cantilever systems.
- The two 2.6kW cast-iron plates are hermetically sealed to the one-piece top.
- The special design of the control knob system guarantees against water infiltration.
- IPX 4 water protection.
- Suitable for countertop installation.

Construction

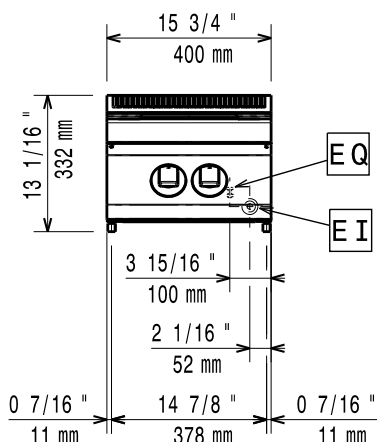
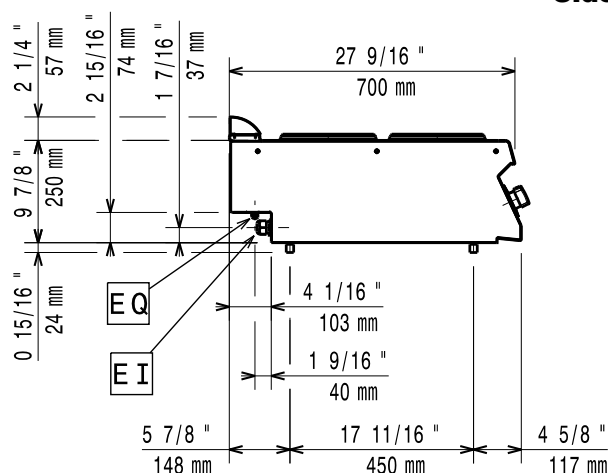
- One piece pressed 1.5 mm work top in Stainless steel.
- Model has right-angled side edges to allow flush fitting joints between units, eliminating gaps and possible dirt traps.
- External panel in Stainless Steel with Scotch Brite finish.

APPROVAL: _____

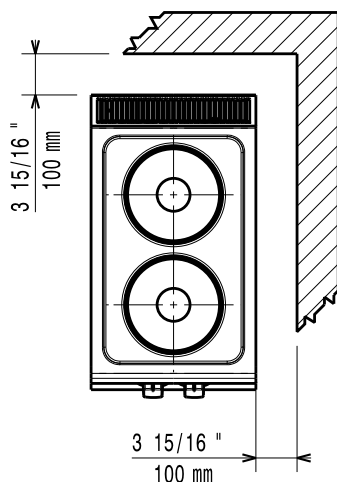
Optional Accessories

• Junction sealing kit	PNC 206086	<input type="checkbox"/>
• Support for bridge type installation, 800 mm	PNC 206137	<input type="checkbox"/>
• Support for bridge type installation, 1000 mm	PNC 206138	<input type="checkbox"/>
• Support for bridge type installation, 1200 mm	PNC 206139	<input type="checkbox"/>
• Support for bridge type installation, 1400 mm	PNC 206140	<input type="checkbox"/>
• Support for bridge type installation, 1600 mm	PNC 206141	<input type="checkbox"/>
• Support for bridge type installation, 400 mm	PNC 206154	<input type="checkbox"/>
• Frontal handrail 400 mm	PNC 206166	<input type="checkbox"/>
• Frontal handrail 800 mm	PNC 206167	<input type="checkbox"/>
• Large handrail (portioning shelf) 400 mm	PNC 206185	<input type="checkbox"/>
• Large handrail (portioning shelf) 800 mm	PNC 206186	<input type="checkbox"/>
• Frontal handrail 1200 mm	PNC 206191	<input type="checkbox"/>
• Frontal handrail 1600 mm	PNC 206192	<input type="checkbox"/>
• Right and left side handrails	PNC 206240	<input type="checkbox"/>
• Water column with swivel arm (water column extension not included)	PNC 206289	<input type="checkbox"/>
• Water column extension	PNC 206291	<input type="checkbox"/>
• Chimney upstand, 400 mm	PNC 206303	<input type="checkbox"/>
• 2 side covering panels, height 250 mm, depth 700 mm	PNC 206320	<input type="checkbox"/>
• Chimney grid net, 400mm	PNC 206400	<input type="checkbox"/>

Modular Cooking Range Line EVO700 2-Hot Plates Electric Boiling Top Range

Front

Side


EI = Electrical inlet (power)
 EQ = Equipotential screw

Top


Electric

Supply voltage:

372014 (Z7ECED2R00)	380-400 V/3 ph/50-60 Hz
372126 (Z7ECED2R0N)	230 V/3 ph/50/60 Hz

Predisposed for:

Total Watts:	5.2 kW
--------------	--------

Key Information:

If appliance is set up or next to or against temperature sensitive furniture or similar, a safety gap of approximately 150 mm should be maintained or some form of heat insulation fitted.

Net weight:	20 kg
-------------	-------

Shipping weight:

372014 (Z7ECED2R00)	24 kg
372126 (Z7ECED2R0N)	23 kg

Shipping height:

372014 (Z7ECED2R00)	530 mm
372126 (Z7ECED2R0N)	540 mm

Shipping width:

Shipping depth:	460 mm
-----------------	--------

Shipping volume:	820 mm
------------------	--------

Shipping volume:	0.2 m ³
------------------	--------------------

[NOT TRANSLATED]

372014 (Z7ECED2R00)	EH72T
372126 (Z7ECED2R0N)	N7CE1

Front Plates Power:	2.6 - 0 kW
---------------------	------------

Back Plates Power:	2.6 - kW
--------------------	----------

Front Plates dimensions:	Ø 230
--------------------------	-------

Back Plates dimensions:	Ø 230
-------------------------	-------